



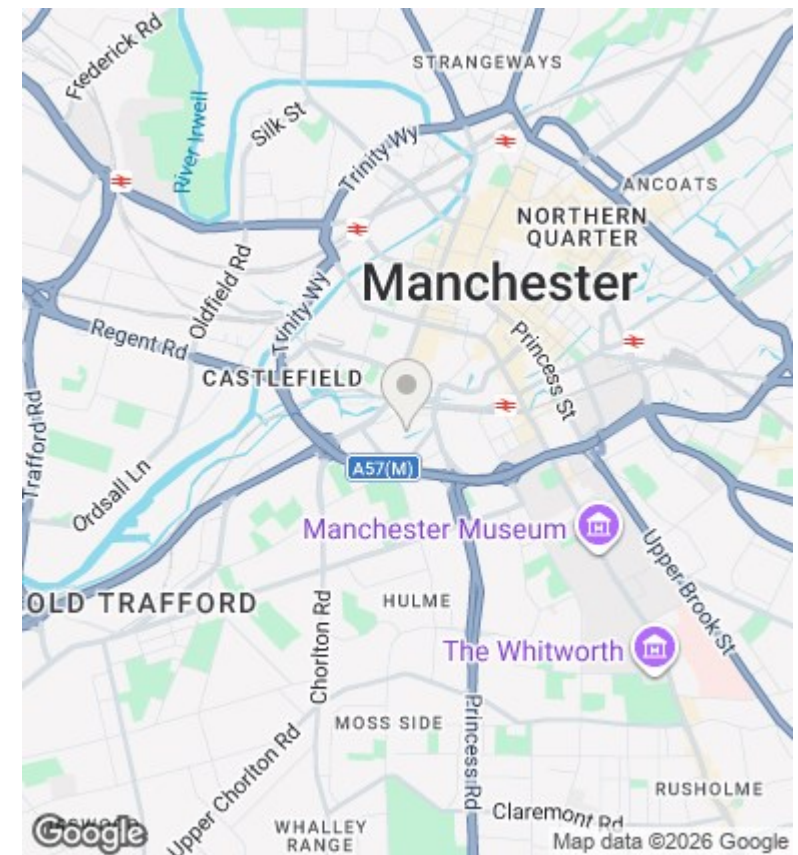
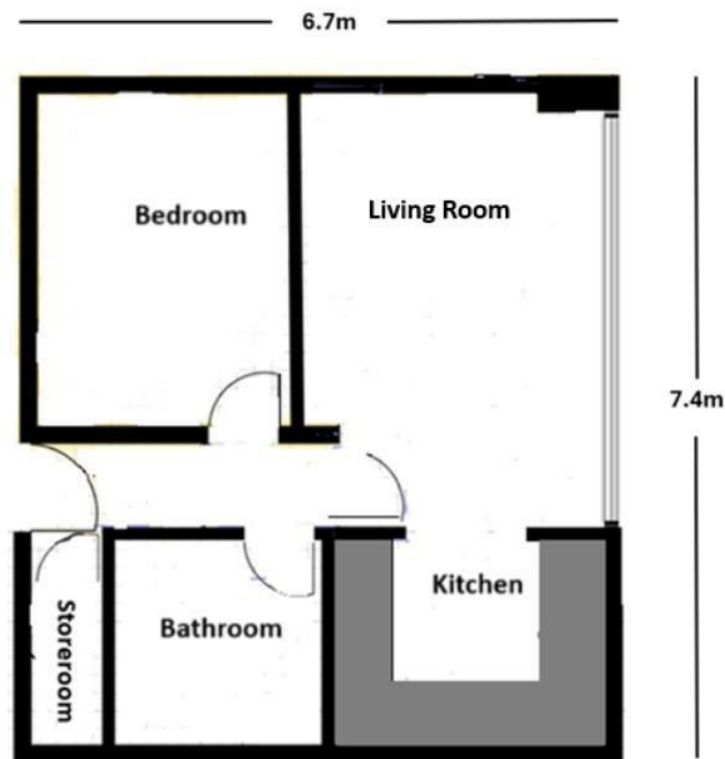
PERFECT PILLARS
Supporting You



Flat 86, 8 Commercial Street, Manchester, M15 4QY

£170,000

- Popular location
- North-west facing
- Close to Manchester city centre and Universities
- 7th Floor apartment
- On site gym facilities
- Ideal for first-time buyers or buy-to-let investors
- No onward chain
- EWS1 (fire safety) certificate



Directions

Viewings

Viewings by arrangement only. Call 01183 048821 to make an appointment.

Council Tax Band

C

EPC Rating:

C

Energy Efficiency Rating		
	Current	Potential
<i>Very energy efficient - lower running costs</i>		
(92 plus) A		
(81-91) B		
(69-80) C	80	
(55-68) D		
(39-54) E		
(21-38) F		
(1-20) G		
<i>Not energy efficient - higher running costs</i>		
England & Wales	EU Directive 2002/91/EC	